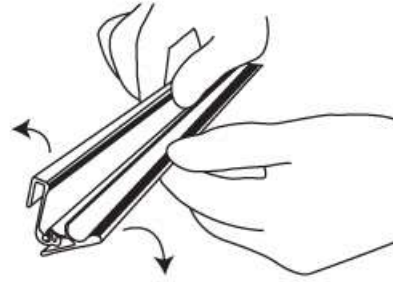
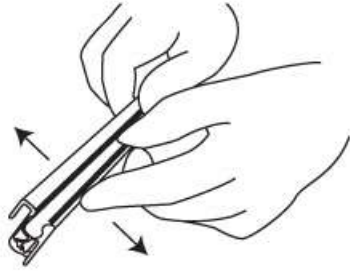
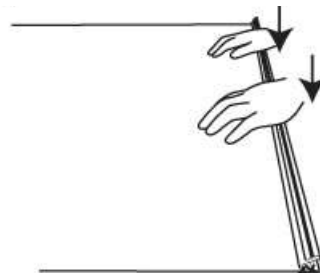
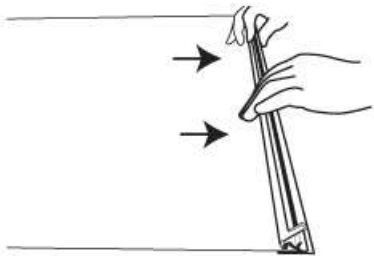


Monteringsanvisning Easybanner standard

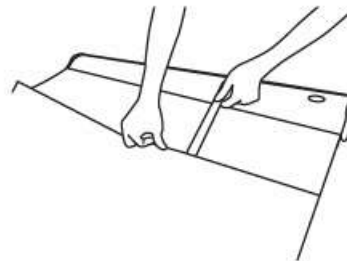
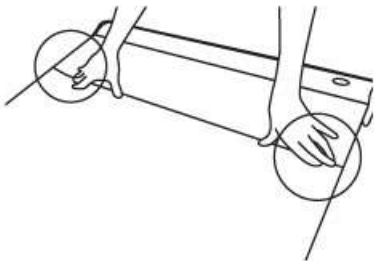
1. Åpne klemprofilen i enden uten verktøy.



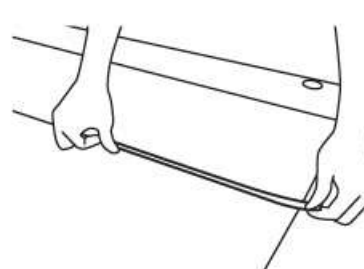
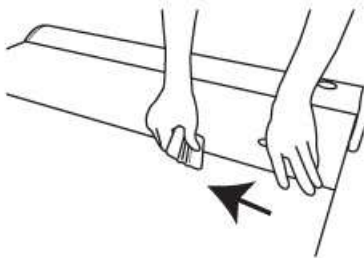
2. Sett media i profilen og hold fingrene på media mens du presser hardt.



3. Fest bunnen av media ved å bruke teipstripen som guidelinje på den hvite pvc duken.



4. Press ordentlig der du har festet media og legg på en ekstra stripe med tape for sikkerhetskyld.



5. Hold fast på media mens du fjerner sikkerhetsnøkkelen. La media gå forsiktig inn i kassen.

